

NATUREED®

- ✓ Stainless Steel Binding
- ✓ Tightly Bound
- ✓ High Quality
- ✓ 50% more reeds than inferior products
- ✓ Long Lasting
- ✓ Natural Colour

Specifications

- Wire every 110mm
- Joins every 600mm
- Delivered rolled up



NATURAL/ORGANIC

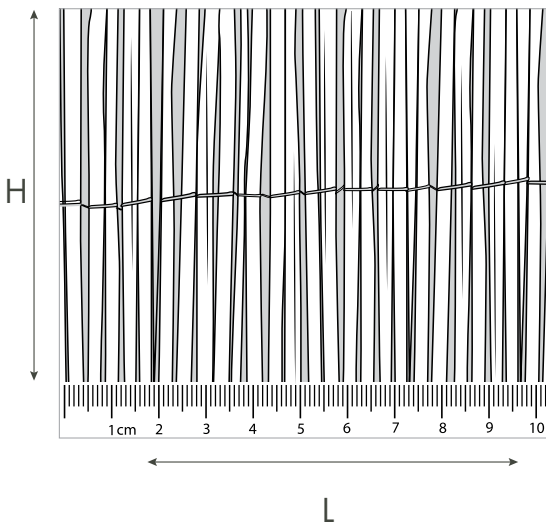
NATUREED®

- ✓ Stainless Steel Binding
- ✓ Tightly Bound
- ✓ High Quality
- ✓ 50% more reeds than inferior products
- ✓ Long Lasting
- ✓ Natural Colour

Specifications

- Wire every 110mm
- Joins every 600mm
- Delivered rolled up

CODE	JOINS	H (mm)	L (mm)	D (mm)	KG/roll
NR-3	0	910	1830	3 - 4	5
NR-4	0	1220	3660	3 - 4	6
NR-5	0	1530	3660	4 - 5	11
NR-6	2	1830	3660	4 - 5	11
NR-6S	0	1830	3660	4 - 5	11
NR-7	2	2000	3660	4 - 5	12
NR-8	3	2440	2440	3 - 4	10
NR-8D	3	2440	4800	3 - 4	18



Natureed®'s beauty lies in its natural look and colour.

Our two most common applications to finish the look off is by securing bamboo timber/treated pine panels to the screen (as in left photo) or using the Natureed® as Capping; folded over the top of the screening.

NATURAL/ORGANIC

BAMBOO ROD SCREENS

- ✓ Stainless Steel Binding
- ✓ Two Natural Colour choices
- ✓ High Quality
- ✓ Long Lasting
- ✓ Ideal for cladding & fencing

Specifications

- Wire ever 600mm
- End spacing 190mm
- Capped at the top
- Delivered rolled up

NATURAL BAMBOO ROD SCREENS



BLACK BAMBOO ROD SCREENS



NATURAL/ORGANIC

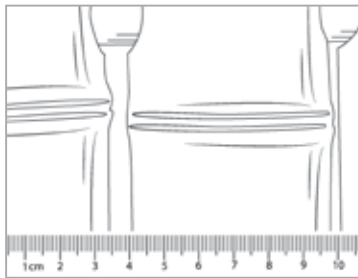
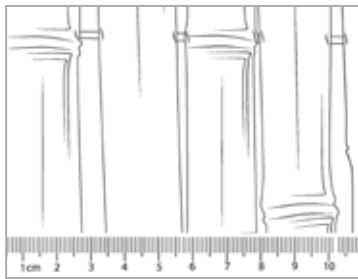
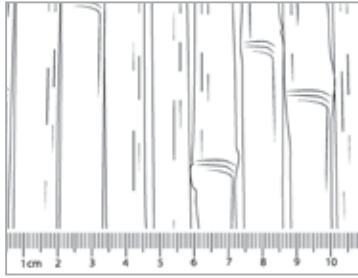
BAMBOO ROD SCREENS

- ✓ Stainless Steel Binding
- ✓ Two Natural Colour choices
- ✓ High Quality
- ✓ Long Lasting
- ✓ Ideal for cladding & fencing

Specifications

- Wire ever 600mm
- End Spacing 190mm
- Capped at the top
- Delivered rolled up

NATURAL BAMBOO ROD SCREENS

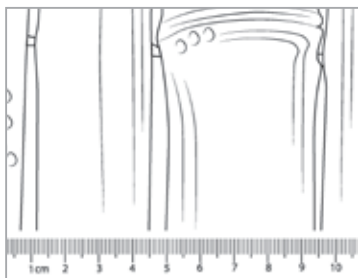
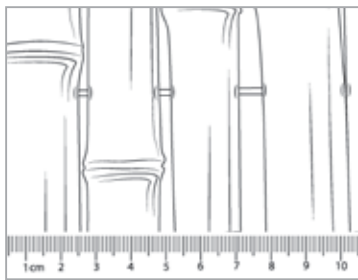


CODE	L (mm)	W (mm)	D (mm)	KG/roll
BRSN-6-15	1800	2440	12 - 15	22
BRSN-8-15	2100	2440	12 - 15	24

BRSN-6-24H	1830	1200	22 - 26	14
BRSN-8-24H	2440	1200	22 - 26	18

BRSN-6-60	1830	1200	55 - 65	25
BRSN-8-60	2440	1200	55 - 65	30

BLACK BAMBOO ROD SCREENS



BRSB-6-24H	1830	1200	22 - 26	14
BRSB-8-24H	2440	1200	22 - 26	18

BRSBM-6-45	1830	1200	35 - 45	22
BRSBM-8-45	2440	1200	35 - 45	26

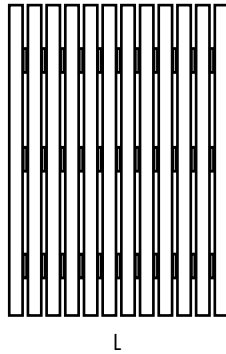
NATURAL/ORGANIC

ACACIA/KEMPAS TIMBER SLAT SCREENS

- ✓ Stainless Steel Binding
- ✓ Plantation Hardwood Timber
- ✓ Flexible & Bendable
- ✓ Ideal for screening
- ✓ Great alternative to Bamboo
- ✓ Pre-made screens

Specifications

- Slats 45(w) x 1.5mm(d)
- Gap size 10mm Kempas. 12mm Acacia
- Wire spacing is dependant on size
- Delivered rolled up



CODE	H (mm)	L (mm)	D (mm)	KG/roll
Kempas Timber Slat Screen				
KEM 4.5	910	2440	15	25
KEM 4	1200	2440	15	30
KEM 3	1830	1830	15	30
KEM 2	1830	2440	15	35

Acacia Timber Slat Screen				
ACA 2	1300	1200	15	17
Screen Supports 1 set				

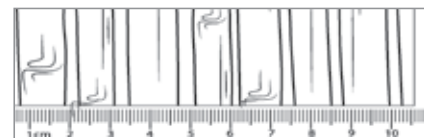
CANE REED

- ✓ Stainless Steel Binding
- ✓ Tightly Bound
- ✓ High Quality
- ✓ Ideal for Cladding & Fencing
- ✓ Great alternative to Bamboo

Specifications

- Wire ever 160 - 170mm
- Delivered rolled up
- End Spacing 110 - 120mm

CODE	H (mm)	L (mm)	D (mm)	KG/roll
CRW-6	1830	2400	13-15	15



NATURAL/ORGANIC

NATUREED

Natureed®'s beauty lies in its natural look and colour. Overtime Natureed®, like all natural products, can fade to a lovely silver-grey colour due to UV exposure. To maintain Natureed®'s natural colour, we recommend that you coat the product with a decking oil or exterior timber stain as this will bring out Natureed®'s colour and protect the Natureed® from further weathering.

We recommend a Sikken's Timber Stain in an Oak or Teak colour. However, you can use any brand you would like. Make sure that the Natureed® is clean before staining. Staining can be done by sweeping with a broom or spraying with water. To coat Natureed® with timber stain, use a paintbrush, a sponge roller or a spray gun. Please note that a spray gun will have more wastage of the stain.

BAMBOO ROD SCREEN

Bamboo is a natural product, and a feature of bamboo is that some poles may split and can fade to a gorgeous silver-grey colour depending on exposure to the sun. Most cracking is a cause of the pressure difference of the air trapped between the nodes and the outside air. It is less of concern in humid areas; the dryer the climate, the more likely it is to crack. Please note that splitting and cracking does not change the structural characteristics of the bamboo and is more common in larger poles than smaller poles. Cracking or splitting is a feature of bamboo and adds to the natural look of the product.

You can coat the bamboo with a clear or tinted stain protector if you do not want the bamboo to grey. However, this is not essential. Make sure that the bamboo is clean before staining. Staining can be done by sweeping with a broom or spraying with water. To coat the bamboo with protector, use a paintbrush, a sponge roller or a spray gun. Please note that a spray gun will have more wastage of the stain.

To install bamboo, please pre-drill holes before screwing bamboo screen into any substrate.

KEMPAS/ACACIA SCREEN

These beautiful hardwood screens will fade to a beautiful grey colour over time when placed in the sun. They can be maintained using a timber oil or furniture stain & protector. Make sure that the surface is clean before staining. Sweeping with a broom or spraying with water can achieve this. Staining can be done by sweeping with a broom or spraying with water. To coat the bamboo with protector, use a paintbrush, a sponge roller or a spray gun. Please note that a spray gun will have more wastage of the stain.

For screening there is screen stands available. For installation, it is the same as any hardwood.

CANE REED

Cane Reed, if installed in a dark, humid area will become mouldy due to a high sugar content. Please refer to the website for installation videos.

To coat the Cane with timber oil, use a paintbrush, a sponge roller or a spray gun. Please note that a spray gun will have more wastage of the stain.