

HOUSE OF BAMBOO

PROJECT BROCHURE



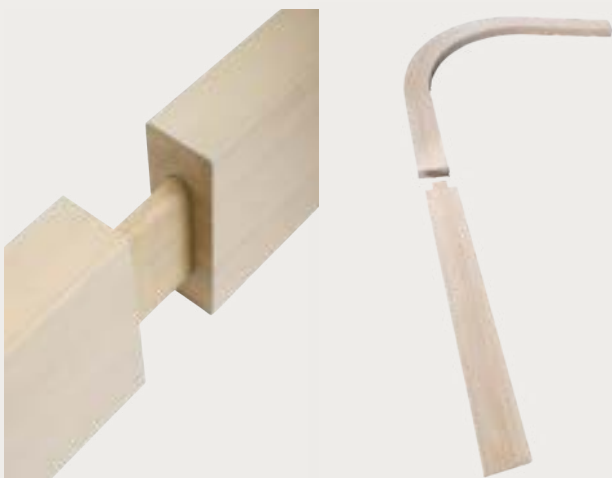
house of
bamboo

EST. 1972



AMPHORA MARVEL STADIUM

Architect: Hachem



The Amphora at Marvel Stadium in Melbourne is a landmark project for the House of Bamboo. When meeting with Hachem Architects & Interiors to discuss the project, the House of Bamboo was asked 'Can you do curves?' Our emphatic response led to the House of Bamboo's engineered beams being utilised to create an innovative ceiling feature that is a centrepiece of this project.

Guided by our visionary team, the project pivoted from traditional materials to engineered bamboo, underscoring the project's commitment to environmental stewardship and pushing the boundaries of traditional design without compromising on style and luxury.



AMRF FIRST PROJECT

Architect: Hassell Studio



The objective of AMRF First building was to provide the first-ever flexible and adaptable state-of-the-art building that utilises unique modular disassembly components that carry out from concept to execution.

In collaboration with Hassell Studio, the House of Bamboo was tasked with integrating engineered bamboo into the façade solutions. Extensive exploration of batten size, screen design, and manufacturing techniques resulted in ease of installation as prefabricated modular systems.

The engineered bamboo batten screens not only provided façade articulation and shade to the high-performance glazed walls but also reinforced the project's commitment to sustainability.

This development is set to achieve a 6-Star Green Star rating, full Living Building Challenge certification and a 5.5-Star NABERS Energy and Water rating. It is energy positive, carbon neutral, water balanced, nature positive, healthy and inspiring.



STOCKLAND CHATSWOOD CHASE PROJECT

Architect: MAKE



Comprising six feature ceiling screens, the Chatswood Chase food court renovation is an innovative and dramatic example of a bespoke bamboo installation.

The screens incorporate elegant ellipse cutouts that strikingly wrap around the edge of the refurbished food hall.

The House of Bamboo relished the opportunity to take on this geometrically challenging project. Unlike a standard oval, ellipses require intricate mathematical calculations to achieve 100 per cent accuracy of the forms during fabrication.

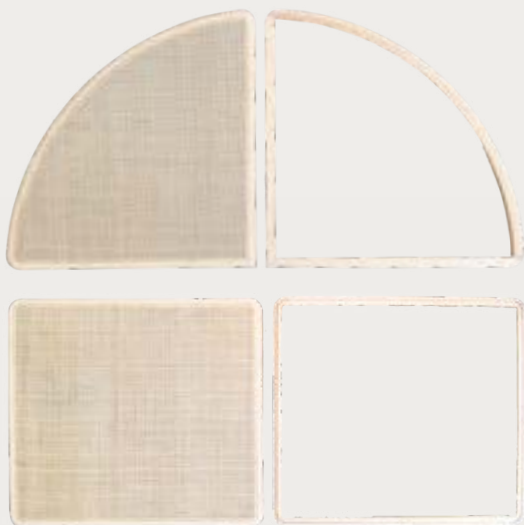
In collaboration with MAKE Architects, Mettle and the wider design team, the House of Bamboo produced perfect, custom screens, realising innovations and solutions regarding weight, manufacturing and stability that matched the client's environmental goals.

This project exemplifies the House of Bamboo's expertise in merging sustainability and innovative design, establishing a new standard for future projects in the industry by delivering a product that is striking and environmentally responsible.



CLARKE AND HUMEL OFFICE PROJECT

Architect: Squillace Architects



This design aims to transcend traditional commercial office environments by offering an elevated and relaxed atmosphere reminiscent of a sophisticated beachside residence.

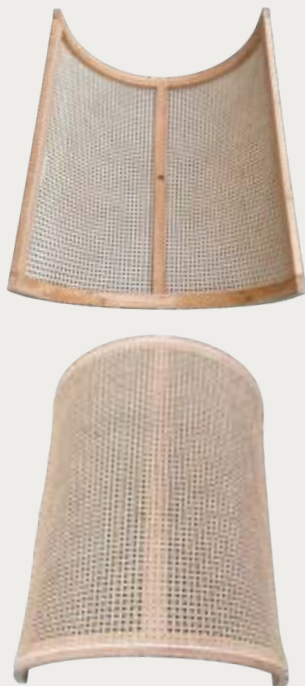
Working closely with Squillace Architects the House of Bamboo team helped deliver an aesthetic that effortlessly integrates a luxurious coastal elegance with corporate practicality. The use of engineered bamboo wall cladding adds light and warmth to the space while the custom bamboo frames with rattan inserts adds texture and tone in keeping with the natural surroundings.

This project highlights the House of Bamboo's ability to not only meet a client's vision but set a new standard and bring new ideas to the office environment.



YO-CHI

Architect: Yo-Chi Design



Delighting in the elegance and light-filled space that is the Yo-Chi store in Burleigh Heads, this install delivers a strikingly contemporary approach to the brand's aesthetic. Designed in collaboration with Claudia Marro from the Yo-Chi design team, the House of Bamboo's materials showcase our team's expertise in providing sustainable and beautiful products to meet our clients' needs.

The curved, engineered bamboo frames create a distinctive design element, seamlessly integrating with the flow of the store and creating a refined and sophisticated finish that delivers form and function. The rattan highlights the material's organic and natural beauty, contributing to the warm and inviting atmosphere. This successful collaboration reinforces our team's ability to produce customised solutions for specific and unique design requirements and reflects our standards at the House of Bamboo to produce premium materials and ensure aesthetic sensibility.

Certified with a Global Green Tag Level A and Platinum Health rating, House of Bamboo Rattan guarantees sustainable manufacturing practices and non-toxicity.



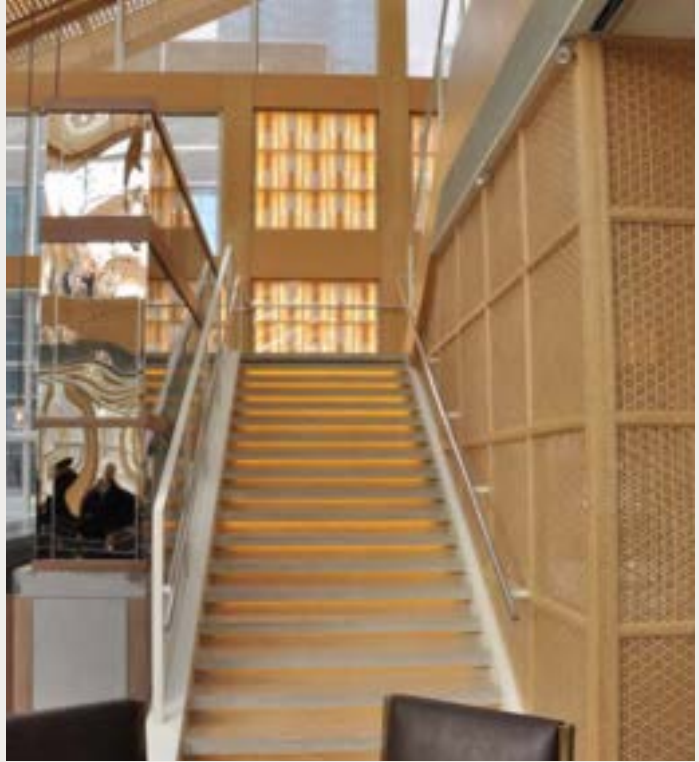
BARED FOOTWEAR

Architect: FJMT Architects



Bared Footwear in Sydney's CBD features wooden panels and large-scale windows from floor to ceiling, making the space bright and welcoming. The design was created by FJMT architects and ACRD interior designers, who worked together to create a stylish and practical space.

A key highlight of the store's unique interior is the use of our rattan product, expertly crafted by Blackbird Architectural Joiner. Our rattan adds a natural, elegant touch to the store, enhancing its aesthetic appeal while aligning with sustainability goals. This feature not only demonstrates the versatility and durability of our rattan but also underscores its role in creating environmentally responsible design solutions. This collaboration has resulted in a space that exemplifies creativity and fine craftsmanship, positioning the Bared Footwear store as a premium shopping destination in Sydney for fashion-forward consumers.



INTERNATIONAL PROJECTS

Examples of the House of Bamboo's work is not only limited to Australian shores. The benefits of bamboo have been widely recognised in other parts of the world for many years. Our factory has been a significant contributor to a number of major projects, where custom bamboo materials are used throughout the project.

Working with some of the world's largest architectural firms, including Hening Larsen and Herzog and de Meuron, these projects feature custom designed and manufactured materials to meet specific design, aesthetic and sustainability requirements. Products include structural materials, curved beams, intricate joinery and veneers; all engineered bamboo that delivers eco-friendly, sophisticated and contemporary solutions.



SHAW AUDITORIUM

Architect: Henning Larsen



The Shaw Auditorium, designed by Henning and Larsen at Hong Kong University of Science and Technology (HKUST), offers an inspiring design and a versatile and acoustically advanced auditorium.

This adaptable and innovative building integrates multiple functions, and engineered bamboo is featured throughout. This delivers a significant sustainable impact and a highly customised acoustic building.

The House of Bamboo's factory played a pivotal role in the design, development, and manufacture of the engineered bamboo for this project. This contributed significantly to the project's environmental influence and is proudly aligned with our mission to produce eco-friendly materials for modern architecture.



M+ MUSEUM

Architect: Herzog & de Meuron



Nestled in Hong Kong's dynamic West Kowloon Cultural District, the M+ Museum emerges as a beacon of contemporary culture, showcasing a striking commitment to sustainability and innovative design. Engineered by the globally acclaimed Swiss firm Herzog & de Meuron, the museum's unique upside-down T-shape offers sweeping views of Victoria Harbour and seamlessly integrates with neighbouring cultural icons.

The museum's design extends across 33 galleries and multiple movie theatres, crowned by a verdant rooftop garden that exemplifies its ecological ethos. The true highlight of M+ Museum's sustainability efforts is its extensive use of engineered bamboo – a testament to bamboo innovation in environmentally friendly construction materials.

Engineered bamboo features throughout the project, including flooring, wall cladding, ceilings, and custom joinery. Notably, our factory specifically crafted the batten ceilings, staircases, balustrades, and handrails, each element celebrating the versatility and aesthetic appeal of bamboo. This expansive use of engineered bamboo sets a new benchmark in sustainable architecture, significantly enhancing the museum's environmental footprint and reflects M+ Museum's dedication to ecological responsibility.

BAMBOO BENEFITS



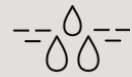
SOIL EROSION
PREVENTION &
RESTORATION



ZERO-WASTE
LIFE CYCLE



GREENHOUSE
GAS EMISSIONS



NATURAL
WATER
PURIFICATION



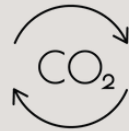
SHORT HARVEST
CYCLE



SELF-
REGENERATING
GROWTH



SUPERIOR WATER
RETENTION



SUPERIOR
CARBON
SEQUESTRATION



NATURALLY
RESISTANT TO
TERMITES



BIODIVERSITY
PRESERVATION



CLIMATE CHANGE
MITIGATION



ENHANCED
OXYGEN
PRODUCTION



A BAMBOO LEGACY

At House of Bamboo®, we are carrying on a legacy that was founded last century, when Mark Snyders first began to source environmentally conscious bamboo. Recognised globally as a leading bamboo specialist, we are committed to creating beautiful, environmentally friendly bamboo products and encouraging Australians to embrace the benefits of bamboo.



A SUSTAINABLE FUTURE

In addition to being House of Bamboo® CEO, Jennifer Snyders also pursues her passion for sustainability by advocating bamboo projects throughout Australia and supporting land regeneration and reforestation.

Having qualified at UNSW with a Bachelor of Science (Architecture), she understands the incredible potential of bamboo and her sense of design and technical understanding has allowed her to develop a range of engineered bamboo products that can out perform timber.

HEAD OFFICE & SHOWROOM



13 Erith Street, Botany NSW 2019

DISPLAY CENTRE QLD

BUILD AND DESIGN CENTRE BRISBANE



66 Merivale Street, South Brisbane QLD 4101

CONTACT



For General Enquiries
info@houseofbamboo.com.au



Local or Interstate: 1800 240 996
International: (+61)2 9666 5703

ONLINE



www.houseofbamboo.com.au



[@house.of.bamboo.australia](https://www.instagram.com/house.of.bamboo.australia)

house of
bamboo

EST. 1972