

RATTAN CANE WEBBING

TEXTURED | HANDMADE

HANDMADE WOVEN MESH MADE FROM THIN
STRIPS OF RATTAN CANE.
EITHER AN OPEN OR CLOSED WEAVE MESH.
OPTIONAL NON-WOVEN CELLULOSE FLEECE.

PRODUCT DATA SHEET

house of
bamboo

EST. 1972

WHY SPECIFYING MATTERS

CHOOSING SUSTAINABILITY WITH CONFIDENCE

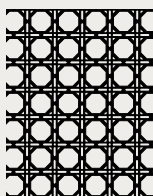


When you specify materials for your projects, it's not just about meeting technical requirements—it's about making a statement on sustainability. At House of Bamboo®, each of our products is more than just a building material; it's a commitment to ethical and environmentally responsible construction. Our engineered bamboo products come with a suite of certifications that assure you of their quality and sustainability:

- Global GreenTag Certified - Level A and Health Rate - Platinum, equating on a global scale to standards such as WELL, Green Star, LEED, IWBI, and the IS Rating Tool. This indicates the highest levels of environmental and health performance, underscoring the global relevance and rigour of our certifications.
- FSC Certification to guarantee that the bamboo is sourced from responsibly managed forests.

When specifying our materials, you must include these environmental credentials to ensure the quality of product for your clients. Additionally, by choosing House of Bamboo®, you are opting for carbon negative products, which significantly reduce greenhouse gas emissions, further cementing your project's role in combating climate change.

House of Bamboo® is accredited by third parties, ensuring specifiers that the materials they choose are genuine. Selecting House of Bamboo® means choosing eco-friendly products of superior quality and integrity. Not all engineered bamboo products are alike; insist on the best—insist on House of Bamboo®.



RATTAN

PRODUCT DATA SHEET

CLASSIFICATION

Series	Textured Handmade
Model	Rattan Cane Webbing
Description	Handmade woven mesh made from thin strips of rattan cane. Either an open or closed weave mesh. Optional non-woven cellulose fleece.

PHYSICAL PROPERTIES

STYLE	MATERIAL FINISH
Finishes - Popular Stains For more information on stains available, go to "Finishes Available" Page 07	Raw
Dimensions Length [L] x Width [W] x Thickness [T]	15250mm [L] x 450mm [W] x 1mm [T] 15250mm [L] x 600mm [W] x 1mm [T] 15250mm [L] x 910mm [W] x 1mm [T] 15250mm [L] x 1000mm [W] x 1mm [T]



PACKAGING PROPERTIES

Width [W] x Diameter [D]	460mm [W] x 200mm [D] 610mm [W] x 200mm [D] 925mm [W] x 200mm [D] 1000mm [W] x 220mm [D]
Quantity Per Pack	1 Roll Per Pack - Item is sold per 500mm length.
Weight & Size Per Pack Width [W] x Diameter [D] = Weight [kg]	Open Weave Roll: 460mm [W] x 200mm [D] = 4.0kg 610mm [W] x 200mm [D] = 4.8kg 925mm [W] x 200mm [D] = 6.5kg 1000mm [W] x 220mm [D] = 10kg Closed Weave Roll: 610mm [W] x 200mm [D] = 8kg 925mm [W] x 200mm [D] = 10kg 1000mm [W] x 220mm [D] = 11kg

SKU BREAKDOWN

Type	Series	Model	Width	Height	Colour	Material	SKU
CANE = Cane Webbing	OPEN = Open Weave CLOS = Closed	3, 3R, 135, 139, 143, 146, 161, 168, 175, 258L	450mm 600mm 910mm 1000mm	15250mm	B = Bleached C = Charcoal I = Ivory L = Light R = Raw	R = Rattan	CANE-OPEN- 168-W450- H15250-R-R

SKU LIST - OPEN CANE WEBBING

CW-3	 <small>CW-3 B&W</small>	CANE-OPEN-3-W600-H15250-R-R CANE-OPEN-3-W910-H15250-R-R
CW-3B	 <small>CW-3B BLEACHED</small>	CANE-OPEN-3B-W600-H15250-R-B CANE-OPEN-3B-W910-H15250-R-B
CW-161	 <small>CW-161 B&W</small>	CANE-OPEN-161-W450-H15250-R-R CANE-OPEN-161-W600-H15250-R-R CANE-OPEN-161-W910-H15250-R-R
CW-161 Backing	 <small>CW-161 BACKING B&W</small>	CANE-OPEN-161-B-W600-H15250-R-R CANE-OPEN-161-B-W900-H15250-R-R
CW-161 Bleached	 <small>CW-161B BLEACHED</small>	CANE-OPEN-161B-W910-H15250-R-B
CW-161 M	 <small>CW-161M B&W</small>	CANE-OPEN-161M-W600- H 15250-R-R CANE-OPEN-161M-W910-H15250-R-R
CW-161 N	 <small>CW-161N B&W</small>	CANE-OPEN-161N-W550-H15250-R-R
CW-168	 <small>CW-168 B&W</small>	CANE-OPEN-168-W450-H15250-R-R CANE-OPEN-168-W600-H15250-R-R CANE-OPEN-168-W910-H15250-R-R
CW-168 Backing	 <small>CW-168 BACKING B&W</small>	CANE-OPEN-168-B-W600-H15250-R-R
CW-168I	 <small>CW-168 I/OB&W</small>	CANE-OPEN-168-W600-H15250-R-I
CW-168L	 <small>CW-168 L&W</small>	CANE-OPEN-168-W600-H15250-R-L
CW-168 Large	 <small>CW-168L B&W</small>	CANE-OPEN-168L-W600-H15250-R-R CANE-OPEN-168L-W700-H15250-R-R CANE-OPEN-168L-W750-H15250-R-R
CW-168 SM	 <small>CW-168SM B&W</small>	CANE-OPEN-168SM-W600-H15250-R-R

SKU LIST - OPEN CANE WEBBING

CW-XO



CANE-OPEN-XO-W600-H15250-R-R

SKU LIST - CLOSED CANE WEBBING

CCW-3R



CCW-3R RAW

CANE-CLOS-3R-W910-H15250-R-R

CCW-135



CCW-135 RAW

CANE-CLOS-135-W600-H15250-R-R
CANE-CLOS-135-W910-H15250-R-R

CCW-139



CCW-139 RAW

CANE-CLOS-139-W600-H15250-R-R
CANE-CLOS-139-W910-H15250-R-R
CANE-CLOS-139-W1000-H15250-R-R

CCW-143



CCW-143 RAW

CANE-CLOS-143-W600-H15250-R-R
CANE-CLOS-143-W910-H15250-R-R

CCW-148



CCW-148 RAW

CANE-CLOS-148-W600-H15250-R-R

CCW-175



CCW-175 RAW

CANE-CLOS-175-W910-H15250-R-R

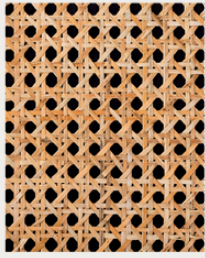
CCW-258L



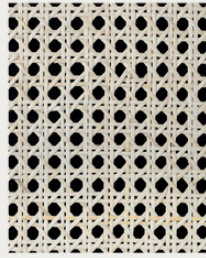
CCW-258L RAW

CANE-CLOS-258L-W910-H15250-R-R

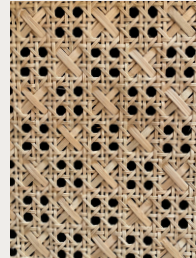
PROFILE - OPEN WEAVE CW-3 & CW-XO



CW-3 RAW

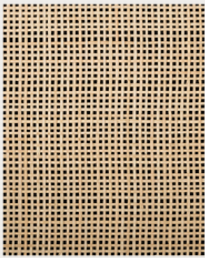


CW-3 B BLEACHED

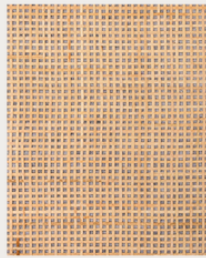


CW-XO RAW

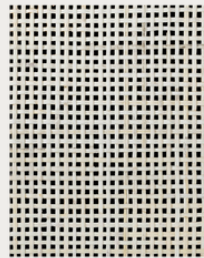
PROFILE - OPEN WEAVE CW-161



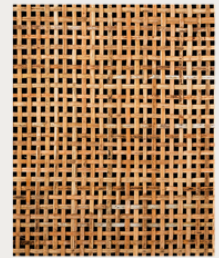
CW-161 RAW



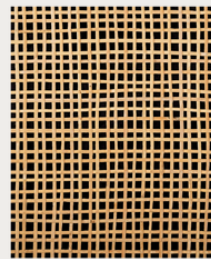
CW-161 BACKING RAW



CW-161 B BLEACHED

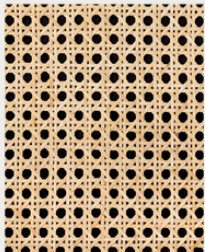


CW-161 M RAW

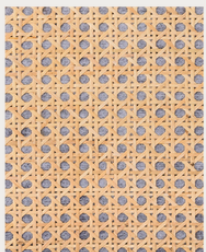


CW-161 N RAW

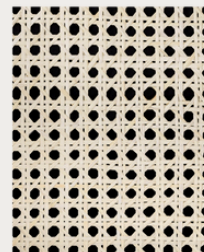
PROFILE - OPEN WEAVE CW-168



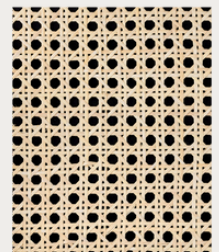
CW-168 RAW



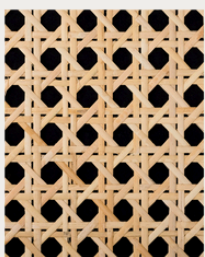
CW-168 BACKING RAW



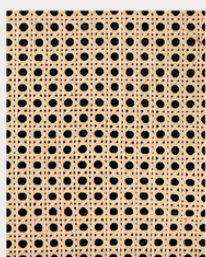
CW-168 IVORY



CW-168 LIGHT



CW-168 L RAW



CW-168 SM RAW

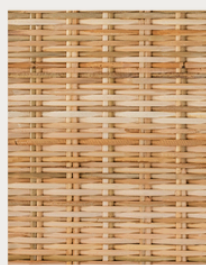
PROFILE - CLOSE WEAVE CCW



CCW-3 R RAW



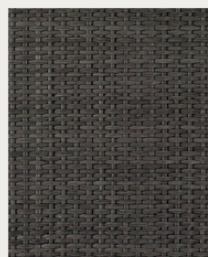
CCW-135 RAW



CCW-139 RAW



CCW-143 RAW



CCW-148 S GREY



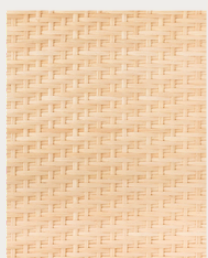
CCW-148 B BLEACHED



CCW-148 RAW



CCW-175 RAW



CCW-258 L RAW

PROFILE - RATTAN CANE BEADING

PRODUCT	CODE	SKU	
Cane Beading Rattan 1mm -2mm [D] x 3000mm [L] Raw	RCB-1	CANE-RATT-1-2-W2-H2000-R	
Cane Beading Rattan 3mm - 4mm [D] x 3000mm [L] Raw	RCB-3	CANE-RATT-3-4-W4-H3000-R	
Cane Beading Rattan 5mm [D] x 2000mm [L] Raw	RCB-5	CANE-RATT-4-5-W4-H2000-R	
Cane Beading Rattan 6mm [D] x 3000mm [L] Raw	RCB-6	CANE-RATT-6-W6-H2000-R	

MATERIAL SPECIFICATION

Composition	Rattan Cane 100% Optional Backing: Non-Woven Cellulose Fleece is Composite of 70% Cellulose, 25% Polyester, and 5% Polyvinyl Acetate
Material Identification	Scientific Classification: Family Palmae, Genus Calamus, Species Rotang
Recommended Use	Lining for chairs, binding, basketry, joinery items, walls, ceilings, and privacy screens.
Hazard Identification	Not classified as Hazardous according to the Globally Harmonised System of Classification and labeling of Chemicals (GHS), including Work, Health and Safety Regulations, Australia. Not classified as Dangerous Goods according to the Australian Code for the Transport of Dangerous Goods by Road and Rail.

*The lifespan of wood, bamboo and other natural materials can be compared by means of a classification according to the European standard EN 350. In the wood industry the classification is common knowledge:
Durability Class 1 = very durable, expected life span 25 years or more // Durability Class 2 = durable, expected life span 15-25 years // Durability Class 3 = moderately durable, expected life span 10-15 years // Durability Class 4 = little durable, expected life span 5-10 years // Durability Class 5 = not durable, expected life span 5 years or less

PRODUCT TECHNICAL SPECIFICATION AND TOLERANCE

PROPERTIES	STANDARD
Indoor Emissions	Class E1 [$<0.124 \text{ mg/m}^3$] [EN 717-1]
Fire Rating	Class 2 AS/NZS 5637.1 - 2015
Nominal Mass per Unit Area/Density	5kg/9.15m ²
Moisture Content	15% - 19%
Nominal Thickness	1mm - 2mm

CERTIFICATIONS

Global GreenTag Standards	GreenRate Level A HealthRate Platinum
International Living Future Institute	Declare Label LBC Red List Approved Material 1-10 Interior Performance: CDPH Standard Method v1.2-2017 1-14 Responsible Sourcing: Product Available with FSC Chain of Custody; Low Risk Wood
FSC	Certified [Available on Request]
Rating Tools	Green Star – AU- GBCA IS Rating – ISCA USGBC LEED V4.0 and v4.1 Rating Tool Credit WELL Features - IWBI
Fire Rating Level	Class 2 (Refer to National Construction Code.)

PRODUCT HEALTH DECLARATION AND HEALTHRATE CERTIFICATION

House of Bamboo's Engineered Organic bamboo products are made with rapidly renewable materials. The products are tested against AS/NZ 3837. House of Bamboo's Organic bamboo products are resistant to termites and require minimal maintenance when installed internally.

HOB GREENTAG CERTIFICATION

Green Building, Interiors & Infrastructure Sustainability Rating Tools	Recognized in Product & Materials Credits and WELL Features	Global GreenTag International Certifications & Declarations			
		GreenRATE Level A	LCARATE	Product Health Declaration	Environmental Product Declaration
WELL, Green Star	VOC, IAC	✓		✓	
LEED	USGBC	✓			
WELL - IWBI	EPDs			✓	
IS Rating Tool	Sustainable Product Ecolabel Certification	✓	✓	✓	✓

FINISHES AVAILABLE - CUSTOM ORDERS

Colour Range	Bleached, Ivory, Light Raw, Raw
Only applicable to certain types of styles. Check with one of our sales consultants for more information.	
Application of Finishes	Please check supplier Product Data Sheet and Safety Data sheets prior to application.
Measurements	Please contact our Sales Team to discuss the available options.

*Please contact our Sales Team to discuss order as cost may differ from standard products.

HANDLING & STORAGE

Precautions for Safe Handling	Material should be stored in a cool dry area. Exposure to moisture may cause mould or mildew to form on the surface of the material.
Minimize Handling	To reduce potential damage to materials, minimize handling and utilize team lifting procedures.

STATEMENT OF RESPONSIBILITY

This publication's technical information and application suggestions are based on the best of our current knowledge. Since the material provided here is general in nature, no guarantee of correctness, dependability, or completeness—either expressed or implied—is offered, save as required by Commonwealth or State law. Moreover, no assumption can be made regarding a product's suitability for a given use or application. The responsibility of verifying that products are appropriate for the purposes for which they are intended falls on the owner, his agent, or the contractor.

TALK TO US ABOUT THE BAMBOO YOU NEVER KNEW

Phone:	Local or Interstate: 1800 240 996
	International: (+61)2 9666 5703
For General Enquiries	info@houseofbamboo.com.au
For any Upcoming Projects	projects@houseofbamboo.com.au
Address	13 Erith Street, Botany NSW 2019
Opening Hours	Monday to Friday: 8:00am - 4:00pm
	Saturday: 9:00am - 1:00pm
	Sunday: Closed
Website	https://www.houseofbamboo.com.au/
Follow Us on Instagram	@house.of.bamboo.australia

