

RATTAN CANE WEBBING

TEXTURED/HANDMADE





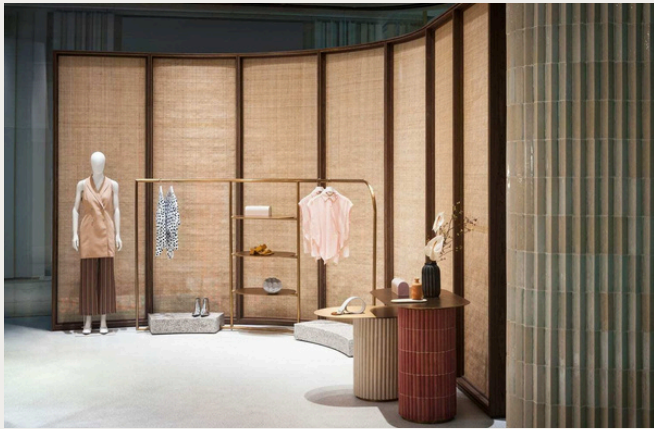
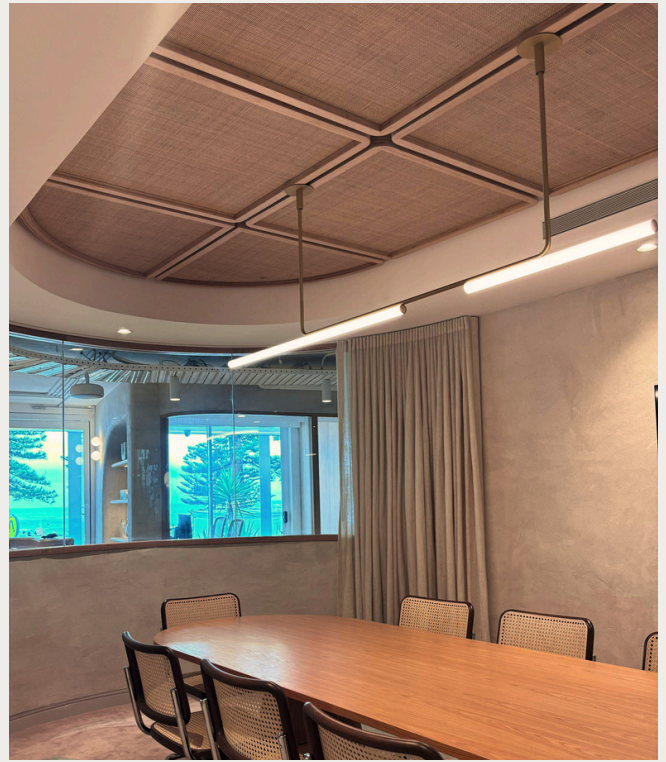
RATTAN CANE WEBBING

A hardy and versatile material, our handwoven artisanal rattan cane webbing is an increasingly sought-after feature. As a sophisticated and relaxed natural fibre, it creates a contrasting background colour or backlighting for a soft warm glow.

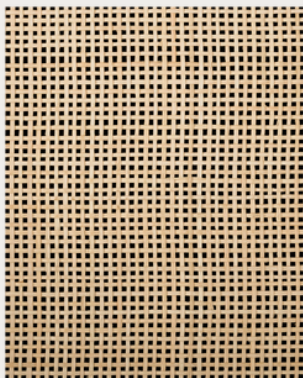
Woven in community villages, our rattan is premium grade and of the highest quality. Our relationship with the community from which it is sourced, dates back more than 40 years, as we continue to support this tradition.

House of Bamboo exclusively offers bespoke bamboo frames with rattan inserts and stocks Australia's largest range of open and closed weaves, with over 20 designs and shades available.

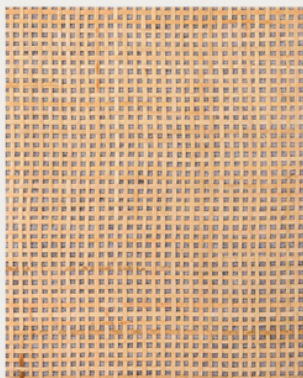




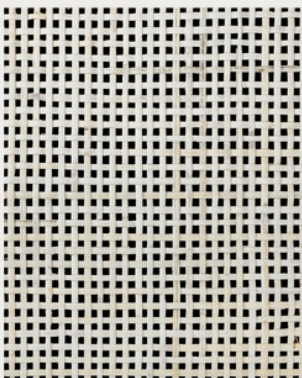
OPEN WEAVE CW-161



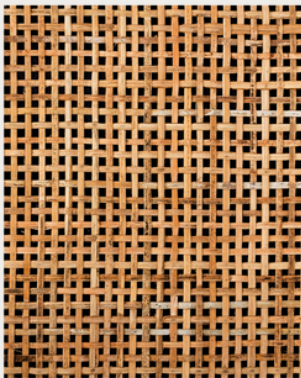
CW-161 RAW



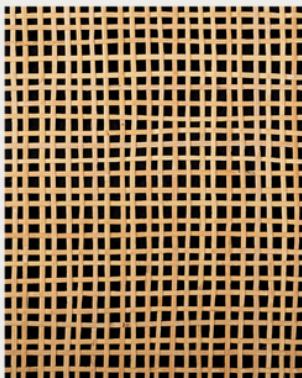
CW-161 BACKING RAW



CW-161 B BLEACHED



CW-161 M RAW

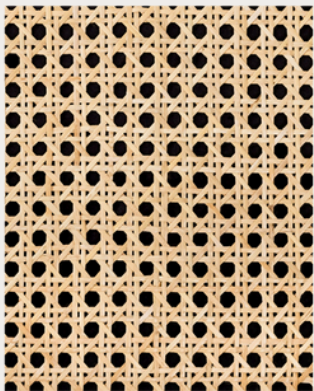


CW-161 N RAW

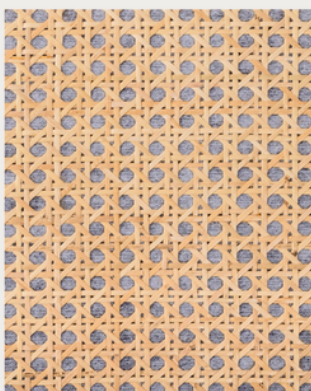
| Colour | Length | Width | Sku |
|-------------|---------|-------|---------------------------------|
| Raw | 15250mm | 450mm | CANE-OPEN-161-W450-H15250-R-R |
| | | 600mm | CANE-OPEN-161-W600-H15250-R-R |
| | | 910mm | CANE-OPEN-161-W910-H15250-R-R |
| Backing Raw | 2500mm | 600mm | CANE-OPEN-161-B-W600-H2500-R-R |
| | | 910mm | CANE-OPEN-161-B-W910-H 2500-R-R |
| B Bleached | 15250mm | 910mm | CANE-OPEN-161B-W910-H15250-R-B |
| M Raw | 15250mm | 600mm | CANE-OPEN-161M-W600-H15250-R-R |
| | | 910mm | CANE-OPEN-161M-W910-H15250-R-R |
| N Raw | 15250mm | 550mm | CANE-OPEN-161N-W550-H15250-R-R |

*All our materials can be customised to suit your project. We can provide specialised sizes to meet your needs.

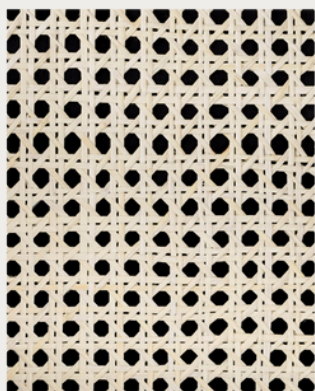
OPEN WEAVE CW-168



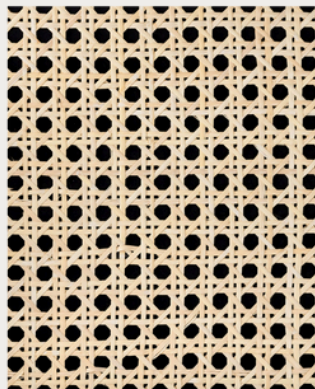
CW-168 RAW



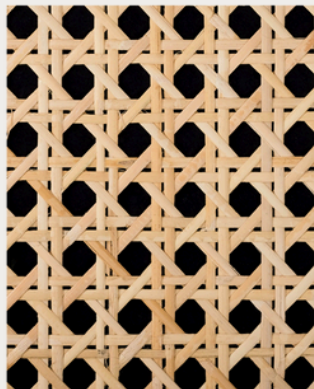
CW-168 BACKING RAW



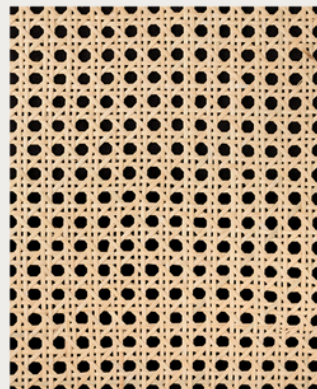
CW-168 IVORY



CW-168 LIGHT



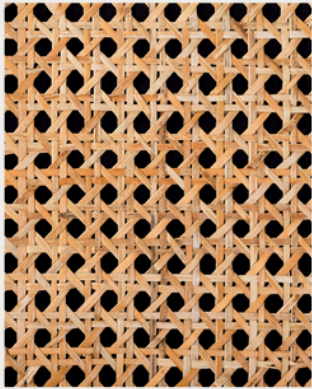
CW-168 L RAW



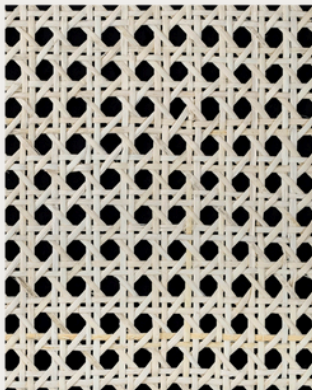
CW-168 SM RAW

| Colour | Length | Width | SKU |
|-------------|---------|-------|---------------------------------|
| Raw | 15250mm | 450mm | CANE-OPEN-168-W450-H15250-R-R |
| | | 600mm | CANE-OPEN-168-W600-H15250-R-R |
| | | 910mm | CANE-OPEN-168-W910-H15250-R-R |
| Backing Raw | 2500mm | 600mm | CANE-OPEN-168-B-W600-H2500-R-R |
| Ivory | 15250mm | 600mm | CANE-OPEN-168-W600-H15250-R-I |
| Light | 15250mm | 600mm | CANE-OPEN-168-W600-H15250-R-L |
| L Raw | 15250mm | 600mm | CANE-OPEN-168L-W600-H15250-R-R |
| | | 700mm | CANE-OPEN-168L-W700-H15250-R-R |
| | | 750mm | CANE-OPEN-168L-W750-H15250-R-R |
| SM Raw | 15250mm | 600mm | CANE-OPEN-168SM-W600-H15250-R-R |

OPEN WEAVE CW-3



CW-3 RAW



CW-3 B BLEACHED

| Colour | Length | Width | SKU |
|------------|---------|-------|------------------------------|
| Raw | 15250mm | 600mm | CANE-OPEN-3-W600-H15250-R-R |
| | | 910mm | CANE-OPEN-3-W910-H15250-R-R |
| B Bleached | 15250mm | 600mm | CANE-OPEN-3B-W600-H15250-R-B |
| | | 910mm | CANE-OPEN-3B-W910-H15250-R-B |

CLOSE WEAVE CCW



CCW-3 R RAW



CCW-135 RAW



CCW-139 RAW



CCW-143 RAW



CCW-148 RAW



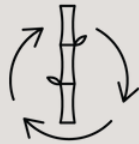
CCW-175 RAW

| Colour | Length | Width | Sku |
|----------|---------|--------|--------------------------------|
| 3R Raw | 15250mm | 910mm | CANE-CLOS-3R-W910-H15250-R-R |
| 135 Raw | 15250mm | 600mm | CANE-CLOS-135-W600-H15250-R-R |
| | | 910mm | CANE-CLOS-135-W910-H15250-R-R |
| 139 Raw | 15250mm | 600mm | CANE-CLOS-139-W600-H15250-R-R |
| | | 910mm | CANE-CLOS-139-W910-H15250-R-R |
| | | 1000mm | CANE-CLOS-139-W1000-H15250-R-R |
| 143 Raw | 15250mm | 600mm | CANE-CLOS-143-W600-H15250-R-R |
| | | 910mm | CANE-CLOS-143-W910-H15250-R-R |
| 148 Raw | 15250mm | 600mm | CANE-CLOS-148-W600-H15250-R-R |
| 175 Raw | 15250mm | 910mm | CANE-CLOS-175-W910-H15250-R-R |
| 258L Raw | 15250mm | 910mm | CANE-CLOS-258L-W910-H15250-R-R |

BAMBOO BENEFITS



SOIL EROSION
PREVENTION &
RESTORATION



ZERO-WASTE
LIFE CYCLE



GREENHOUSE
GAS EMISSIONS



NATURAL
WATER
PURIFICATION



SHORT HARVEST
CYCLE



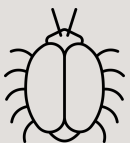
SELF-
REGENERATING
GROWTH



SUPERIOR WATER
RETENTION



SUPERIOR
CARBON
SEQUESTRATION



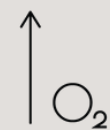
NATURALLY
RESISTANT TO
TERMITES



BIODIVERSITY
PRESERVATION



CLIMATE CHANGE
MITIGATION



ENHANCED
OXYGEN
PRODUCTION



A BAMBOO LEGACY

At House of Bamboo®, we are carrying on a legacy that was founded last century, when Mark Snyders first began to source environmentally conscious bamboo. Recognised globally as a leading bamboo specialist, we are committed to creating beautiful, environmentally friendly bamboo products and encouraging Australians to embrace the benefits of bamboo.



A SUSTAINABLE FUTURE

In addition to being House of Bamboo® CEO, Jennifer Snyders also pursues her passion for sustainability by advocating bamboo projects throughout Australia and supporting land regeneration and reforestation.

Having qualified at UNSW with a Bachelor of Science (Architecture), she understands the incredible potential of bamboo and her sense of design and technical understanding has allowed her to develop a range of engineered bamboo products that can out perform timber.

OFFICE & SHOWROOM NSW



13 Erith Street, Botany NSW 2019

SHOWROOM QLD



66 Merivale Street, South Brisbane QLD 4101

CONTACT



For General Enquiries
info@houseofbamboo.com.au



Local or Interstate: 1800 240 996
International: (+61)2 9666 5703

ONLINE



www.houseofbamboo.com.au



[@house.of.bamboo.australia](https://www.instagram.com/house.of.bamboo.australia)

house of
bamboo

EST. 1972