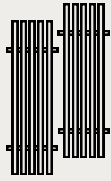


SEACHANGE PANELS

INSTALLATION & MAINTENANCE MANUAL

DOCUMENT	REVISION	SUPPLIER
SeaChange Series - Installation and Maintenance Manual	02 - 4/12/2024	House of Bamboo 13 Erith Street, Botany, NSW 2044



SEACHANGE PANEL

INSTALLATION & MAINTENANCE MANUAL

MATERIAL HANDLING

Reduce Handling: This is the most effective strategy for decreasing harm. To avoid excessive handling, plan your storage and process flow processes properly from our warehouse to your home. Materials should be stored in a safe dry place in their packaging until it will be used.

ACCLIMATISATION

The most crucial precaution to take to ensure a successful installation is to acclimatise the panels beforehand due to variations in relative humidity across different regions of Australia. The moisture level of the cladding must be properly acclimated to your environment's conditions. An improper acclimation process may result in the substrate expanding and/or shrinking more than usual after installation. The cladding should be allowed to acclimatise in its unopened packaging for at least 48 hours at a standard room temperature of 18 to 25 degrees Celsius and a relative humidity of 50 to 70%.

CARE & MAINTENANCE

Indoor Application:

- If accidents occur such as spills, wipe the affected area with slightly damp cloth. Check with coatings manufacturer for advice regarding their recommendations.

Outdoor Application:

- Recommended to apply oil every 18 - 24 months, depending on the exposure to elements [sun or water].
- If screens become dirty, then use a pressure hose to clean them, and allow them to dry fully prior to reapplying the oil.

Note: HOB recommends the use of WOCA Water-Based Oil. However, any good-quality oil designed for hardwood is also suitable for maintaining your engineered bamboo product.

<https://wocadenmark.com/product/maintenance-oil/>

HANDLING & STORAGE

Precautions for Safe Handling

Material should be stored in a cool dry area. Exposure to moisture may cause mould or mildew to form on the surface of the material.

Minimize Handling

To reduce potential damage to materials, minimize handling and utilize team lifting procedures.

HANDLING & STORAGE

Proper Stacking	Materials should be stored flat on raised blocking of equal thickness and spacing. Recommended spacing for spacers is every 30 to 60 cm.
Light	Avoid long exposure to direct sunlight for unfinished materials.
Acclimatisation	Materials should be allowed to acclimate to the installation environment and humidity prior to installation. Recommended acclimation time is 48 to 72 hours.

GUIDELINES FOR CLEANING THE BAMBOO

Engineered bamboo used externally would usually accumulate dust and dirt from the environment over time. We recommend inspecting the material every 6 to 12 months. Follow these guidelines to ensure proper care:

Removal of Surface Dirt	<p>Use a hose and a soft-bristled broom to remove loose dust and dirt. This prevents scratches from particles that may grind against the surface.</p> <p>For surface mould or more stubborn stains you could use a pressure hose. This will strip the protective oil coating which will need to be reapplied. Check with Coatings manufacturer before using this approach.</p> <p>Refer to cleaners recommended by coatings manufacturer.</p>
WOCA Manual	Please refer to coatings manufactures manual regarding maintenance. However, we strongly recommend maintenance every 12 months: https://wocadenmark.com/product/maintenance-oil/
Drying	Always dry the surface immediately after cleaning to prevent moisture damage. Use a clean, dry cloth to remove any remaining moisture.

ROUTINE CLEANING REQUIREMENTS

Regular cleaning is essential to keep your engineered bamboo in optimal condition. Establish a routine based on the following frequency:

12 Months	<ul style="list-style-type: none">• Deep Cleaning: Conduct a more thorough cleaning using a slightly stronger solution if necessary, but always test the solution on a small area first.• Inspection: Check for signs of wear, scratches, or damage. Address any issues immediately to prevent them from worsening.
-----------	--

FINISHES

As with hardwood, it is always recommended to test stains and finishes to ensure desired results. Apply finishes according to the manufacturer's specified thickness and temperature. Additionally, test the adhesion or finish to ensure compatibility between the treatment, the bamboo panel, and the installation environment.

INSTALLATION MATERIALS

- Seachange Series Screens.
- Self-Drilling Screws.
- Stainless Steel Nails [Optional]:
 - Recommended: Paslode - C1 Stainless Steel Brad Nails
- Framing/Capping:
 - Capping Battens
 - HOB Flat Bamboo or Timber Battens. Long enough to cover horizontally the length of the screen together/the higher the screen the more aluminium strips.
- Shade Cloth [Optional]

PREPARATION

1. **Add Shade Cloth to the Structure [Optional]:**

If desired, you can use shade cloth to completely block out the background. The choice of shade cloth is at the builder's discretion. Use a nail gun to secure the cloth to the structure.

2. **Create a structure:**

If you have an existing fence: Use flat Timber battens to create a structure with the same length and height as your SeaChange screen. It's crucial to measure and match the height of the horizontal batten rails to the aluminium strips height in your SeaChange screen (we can provide the builder with technical drawings). If you need to extend the height of the existing fence, you need to build a structure to hold new screens above the existing fence (please see the photos below). Make sure to use stainless steel screws suitable for your particular substrate. If you don't have a fence, contact a builder to install a framework structure so that you can attach your Bamboo Screens to it. (please see the photos below).

INSTALLATION - EXTERNAL VERTICAL APPLICATION

1. **Fitting using Pre drilling screws:**

Once the structure is ready with the shade cloth (optional), align the aluminium strips of the SeaChange panels with the horizontal framework you've set up. Attach the panel through the pre-drilled holes in the aluminium strips, and screw it into your framework. There's no need to screw directly into the face of the bamboo battens itself.

2.. **Congratulations your SeaChange Fence is now Complete!**

Existing fence extension:



Please note this Torquay-Sapphire Custom Fence provided for reference purposes only and should not be considered a guarantee of an exact final outcome.

INSTALLATION - EXTERNAL VERTICAL APPLICATION



Installing a Screen to the frame structure.



This images show the pre-drilled holes.

INSTALLATION - EXTERNAL HORIZONTAL APPLICATION

What you will need:

- Seachange Screen
- Stainless steel nails (we recommend: C1 Stainless Steel brad Nails by Paslode).
- 2 steel posts per module*, long enough to cover vertically the height of your fence at least two times per module (depending how many aluminium strips are holding the screen together/ the wider the screen the more aluminium strips). You can decide how many panels you want to use per module depending on the height wanted.
- Self Drilling Screws.
- Framework structure by builder (optional and depending on type of installation)

Before beginning the installation, it is crucial to ensure that the wall to which you will be applying these screens is firm and in good conditions.

INSTALLATION GUIDE

1. Create a structure:

If you have an existing fence: Use flat Timber battens to create a structure with the same length and height as your SeaChange screen. It's crucial to measure and match the height of the horizontal batten rails to the aluminium strips height in your SeaChange screen (we can provide the builder with technical drawings). If you need to extend the height of the existing fence, you need to build a structure to hold new screens above the existing fence (please see the photos below). Make sure to use stainless steel screws suitable for your particular substrate. If you don't have a fence, contact a builder to install a framework structure so that you can attach your Bamboo Screens to it. (please see the photos below).

INSTALLATION - EXTERNAL VERTICAL APPLICATION

1. Fitting using Pre drilling screws:

Once the structure is ready with the shade cloth (optional) , align the aluminium strips of the SeaChange panels with the horizontal framework you've set up. Attach the panel through the pre-drilled holes in the aluminium strips, and screw it into your framework. There's no need to screw directly into the face of the bamboo battens itself.

2. Congratulations your SeaChange Fence is now Complete!



SeaChange Screen Fence with 5 modules.



Aluminium strips screwed into the posts

INSTALLATION - INTERNAL WALL

What you will need:

- Seachange Screen
- Stainless steel nails (we recommend: C1 Stainless Steel brad Nails by Paslode).
- Self Drilling Screws.
- Framework structure by builder (optional and depending on type of installation)

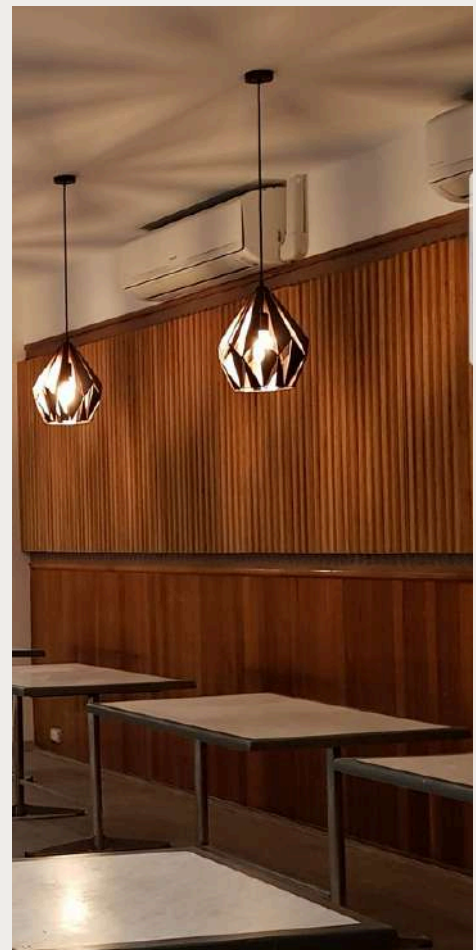
Before beginning the installation, it is crucial to ensure that the wall to which you will be applying these screens is firm and in good conditions.

INSTALLATION - INTERNAL WALL

1. **Ensure proper sizing and alignment of the screen to the wall:**
Measure the surface and compare it with the SeaChange Screen measurements. Cut your screen if necessary. Make sure you're leaving at least 2 aluminium strip rails. You can buy extra rails at House of Bamboo, to secure your screen.
2. **Fit SeaChange Screens:**
Place screens on the wall, and simply screw the screen through the existing pre-drilled holes in the aluminium strips. The type of screws you should use to attach the screens to your wall depends on the material you are installing on and the weight of the screen. Consult with your installer, and ensure that the screen is securely fastened to the wall.
3. **Completion:**
Your SeaChange Installation is now completed.



SeaChange Cottesloe Horizontally.



SeaChange Cottesloe Vertical.

INSTALLATION - INTERNAL SELF STANDING SCREENS

What you will need:

- Seachange SeaChange Screen
- Stainless steel nails (we recommend: C1 Stainless Steel brad Nails by Paslode).
- Self Drilling Screws.
- Framework structure long enough to cover vertically the height one time per panel unit and horizontally the length of your screen at least two times. You can either cover all the aluminium strips holding the screen together with the structure (the higher the screen the more aluminium strips), or cover just 2 and use "Seachange Strip Covers" to hide the aluminium strips.

Before beginning the installation, it is crucial to ensure that the wall to which you will be applying these screens is firm and in good conditions.

INSTALLATION - INTERNAL SELF STANDING SCREENS

1. Create a structure:

Contact a builder to install a framework structure with posts and rails so that you can attach your Bamboo Screens to it. It's a good idea to use Bamboo Engineered Battens provided by House of Bamboo. It's crucial to measure and match the height of the horizontal batten rails to the aluminium strips height in your SeaChange screen (we can provide the builder with technical drawings). Cut your screen if necessary. Make sure you're leaving at least 2 aluminium strip rails. You can buy extra rails at House of Bamboo, to secure your screen.

2. Fitting using Self-drilling screws:

Once the structure is ready, align the aluminium strips of the SeaChange panels with the horizontal framework you've set up. Attach the panel using the aluminium strips, and screw it into your framework. There's no need to screw directly into the face of the Screen Bamboo batten itself. If required, hide the uncovered aluminium strips with "Seachange Strip Covers".

3. Completion:

Your SeaChange Self Standing Screen is now completed.



Hiding aluminum strip with Seachange Cover.

INSTALLATION - INTERNAL SELF STANDING SCREENS



Self-standing Silhouette screen
(for reference purposes only)



Self-standing Silhouette screen
(for reference purposes only)

TALK TO US ABOUT THE BAMBOO YOU NEVER KNEW

Phone:	Local or Interstate: 1800 240 996
	International: (+61)2 9666 5703
For General Enquiries	info@houseofbamboo.com.au
For any Upcoming Projects	projects@houseofbamboo.com.au
Address	13 Erith Street, Botany NSW 2019
Opening Hours	Monday to Friday: 8:00am - 4:00pm
	Saturday: 9:00am - 1:00pm
	Sunday: Closed
Website	https://www.houseofbamboo.com.au/
Follow Us on Instagram	@house.of.bamboo.australia

